



Empowered by
Innovation

pcsonscastings.com



About us

P.C.Sons Castings, a truly committed foundry in achieving excellence in quality of its products & services as per today's market demands. Our technical ingenuity has provided cast iron solutions since 1980. We utilize advanced multiple technological resources to enhance our products & services.

We are an IATF – 16949 : 2016 certified Company.

Kumar Industries

1980

PC Sons Castings (P) Limited

1993

Certification to ISO 9001

2006

Installation of 1st Sinto High Pressure Mould Line

2009

Certification to ISO/TS 16949

2011

Initiation of Machine shop

2012

Started sister concern Unit II - PCS Auto Cast

2014

Installation of 2nd Sinto High Pressure Line @ Unit II

2016

Installation of ARPA 300 Moulding Line

2017

Machine Shop Expansion
Added Additional CNC 6 No's & VMC 2 No's

2018

Upgraded Foundry Facilities at Unit I & 3rd
Sinto High Pressure Moulding line at Unit II

2018

Milestone



Strength & Capabilities

The Foundry has a built-up area of **75,000 Sq.ft.** Constructed in total land area of Five Acres. The Foundry is well equipped in the areas of Molding, Core Shop, Fetting, and Quality & Testing. The detailed list of Equipment's installed is enclosed.

We are having fully equipped Spectro Lab and a complete chemical and sand analysis laboratory to analyze the incoming raw materials & produced castings. The production capacity is around **1500 MT** per month for C.I. & Ductile iron Castings.



Production Capabilities

Moulding

Machine Name	Make	Box Size	QTY
High Pressure Moulding Machine	Sinto FBO III	660x508x 200/200mm	1 No
Arpa 300 Moulding Machine	Disa	520x520x 150/150mm	1 No
Arpa 450 Moulding Machine	Sarvamangala	650x700x 200/200mm 600x700x 200/250mm	1 No

Sand Plant - Capacity 40 Tons/Hour

Machine Name	Make	Capacity	QTY
Intensive Sand Mixer	Disa	500 Kg	1 No
Intensive Sand Mixer	SSEC	500 Kg	1 No

Melting

Machine Name	Make	Capacity	QTY
Furnace Tritrack/500Kw	Inductotherm	500 Kg	3 No's

Coreshop

Machine Name	Make	Capacity	QTY
Cold Box Core Shooters (Single Station semi automatic)	GCS	0.5-15 Kg's	5 No's
Shell Core Shooter	RPI	0.5-5 Kg's	1 No
Oil Core Making Facility	---	---	---
Co2 Core Making Facility	---	---	---

Fettling

Machine Name	Make	Capacity	QTY
Hook Spin Shotblasting	SSEC	500 Kg	1 No
Tumblasting Machine	PATEL	500 Kg	1 No
Pedestal Grinding Machine	SSEC	---	20 No's
Swing Grinding Machine	SSEC	---	1 No
Cut off machine	SSEC	---	2 No's
Wedge Cutting Machine	SVEPL	---	1 No



Spectrometer
Capable of all the 27 iron based elements



Image Analyzer Microscope
50 to 500X capacity



Digital Vernier, Pistol Caliper, Micrometer and all other testing & measuring equipments.



Sand Lab



Universal Testing Machine
Make : Krystal Elmec



Brinell Hardness Testing Machine
Make : Krystal Elmec



**AMS Vertical Milling
MCV 400**

Capacity = 1000x450mm
1 No



**JYOTI Vertical Milling
Machine**

RS20 Capacity = 800x450mm
2 No's



**JYOTI GS250
Turning Centre** | **ACE Micromatic TC**
Jobber XL Elite
Jobber SJ 400

Capacity = 800x450mm - 2 No's
Capacity = 320x400mm - 2 No's
Capacity = 350x400mm - 2 No's



**LMW LS20 TL3
Turning Centre**

Capacity = 200x200mm
6 No's



**Co-ordinate Measuring
Machine**

Make : Zeiss Contura -
g2 - 500x500



**2D Height Master Electronica
2D Height Master**

Advantage 0-600mm

Awards & Accolades



BEST FOUNDRY Award in
2009- 2010 by Indian Institute of foundry man

Best Practical Foundry man award by
M/s.Rangasayee Alloy Castings

M/s. TAFE Global Supplier Meet 2012-13

M/s. JMI Supplier meet 2015-16

M/s. JMI Supplier meet 2017-18

M/s. JMI Best Supplier Award 2017-18

M/s. JMI Best Supplier Winner 2018-19

M/s. JMI Quality Month Celebration Winner 2018-19

M/s. JMI Best Quality Month Involvement - "Winner" 2019-20



IATF 16949: 2016 Certified by
TUV SUD since 2018

Certificates & Accreditation

Domain Expertise

At PC Sons we serve to different industry segments. Like Automotive, Hydraulics, Tractor / Farm Equipment's, Motor & Pumps, Power Transmission and General Engineering.



Automotive



Hydraulics



Tractor / Farm Equipment's



Motor & Pumps



Power Transmission



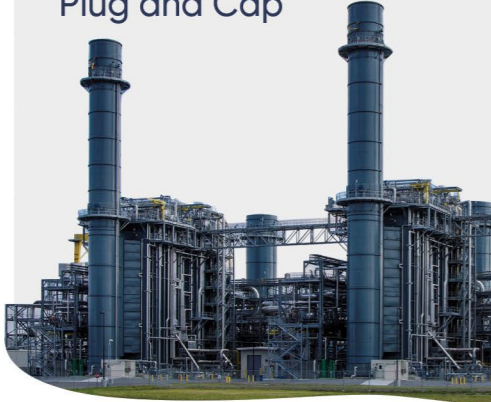
General Engineering

Steering Housing
Covers
Gearbox Mounting Bracket
Sprocket



Automotive

Rigid Couplings
Elbow
Plug and Cap



General Engineering

Timing Gear Case
Rear Axle Drive
Foot Rest
Piston
Adaptor Plate
Manifolds
Chain Case Cover
Plate Differential Carrier

Tractor / Farming Equipments



Motor Body
Chamber
Diffuser
Housing
Fan Shield

Motor & Pumps



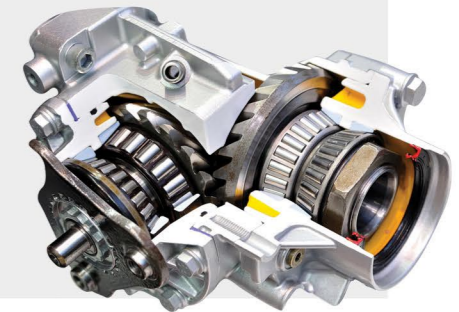
Closing Cover
Pump Mounting Flange
Pump Body
Pump Cover

Hydraulics



Gear Box Hosing
Internal Support
Covers
Motor flange

Power Transmission



Automotive



Hydraulics



Tractor / Farm Equipments



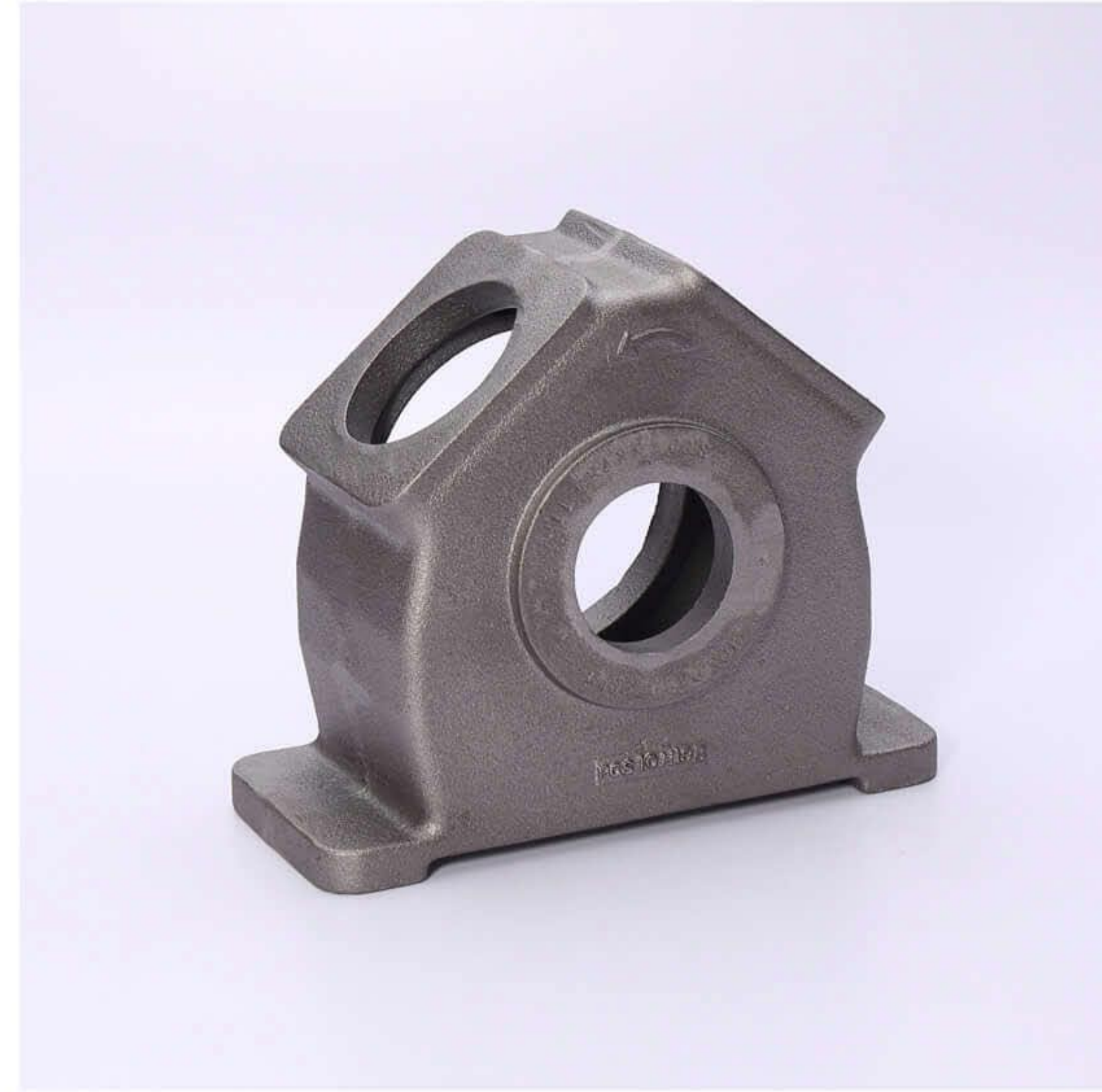
Motor & Pumps



Power Transmission



General Engineering



Machining Parts

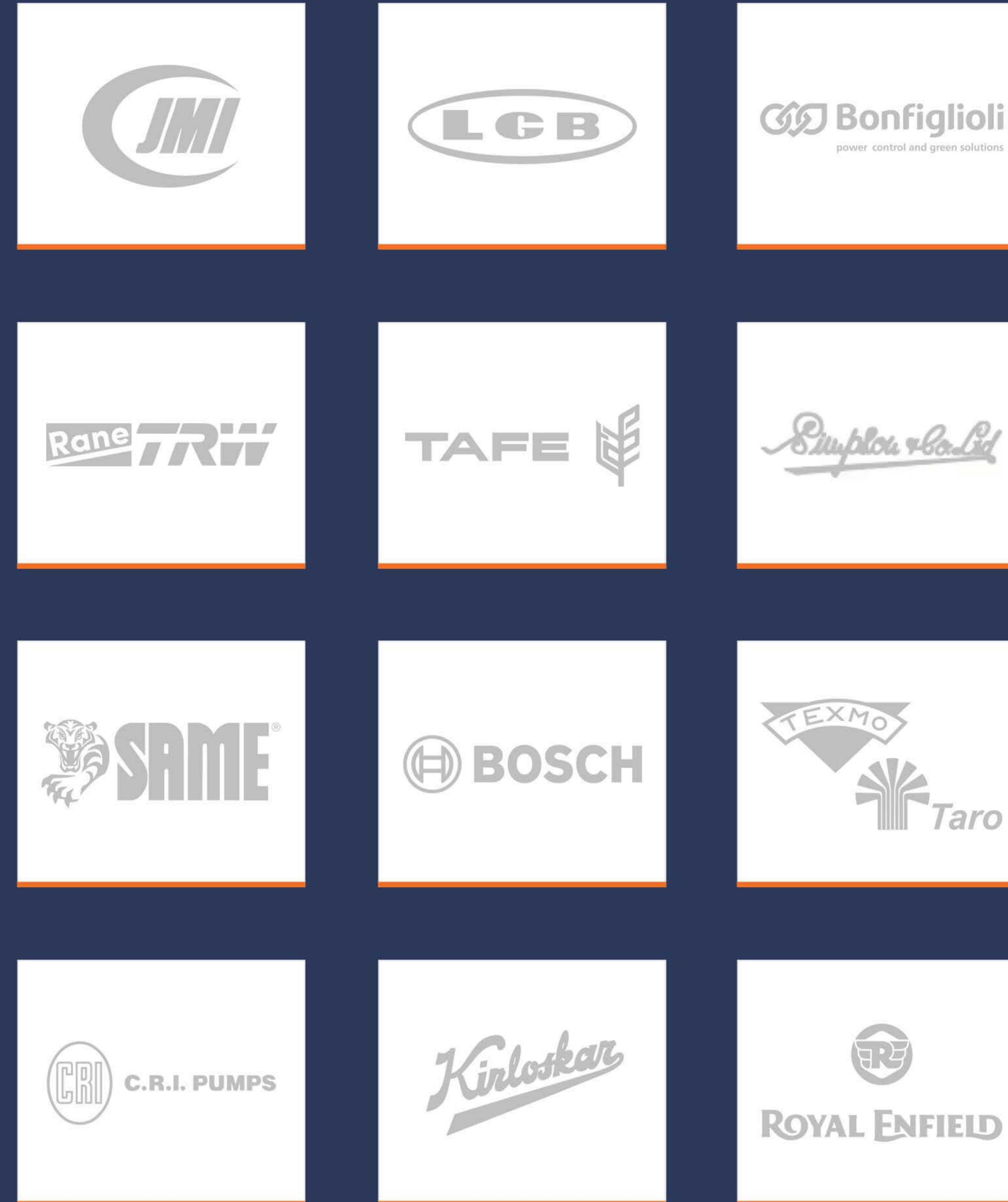


Grades



JM Fricttech India Pvt Ltd
 L.G.Balakrishnan & Bros Ltd
 Bonfiglioli Transmissions Pvt Ltd
 Rane TRW Steering Systems Pvt Ltd
 Tractors and Farm Equipment Ltd
 Simpson & Co Ltd
 SAME Tractors
 Bosch Limited
 Texmo industries
 CRI Pumps Pvt Ltd
 Kirloskar Brothers Ltd
 Royal Enfield

SOME OF OUR
**PRESTIGIOUS
 CUSTOMERS**



PCS is Committed in preservation of energy resources and develop alternate sources of green energy through wind mill installations.



The self generated electric power meets the substantial energy requirement of the company.



The sense of utilizing green energy resource has marked PCS as one among the few environmentally responsible companies in the country.

Environmental
Responsibility





P.C.Sons Castings (P) Limited

322, Pollachi Main Road, Malumichampatti,
Coimbatore 641050, Tamil Nadu, INDIA

☎ +91-422-2610310

☎ +91 99430 20500

✉ marketing@pcsonscastings.com

🌐 www.pcsonscastings.com